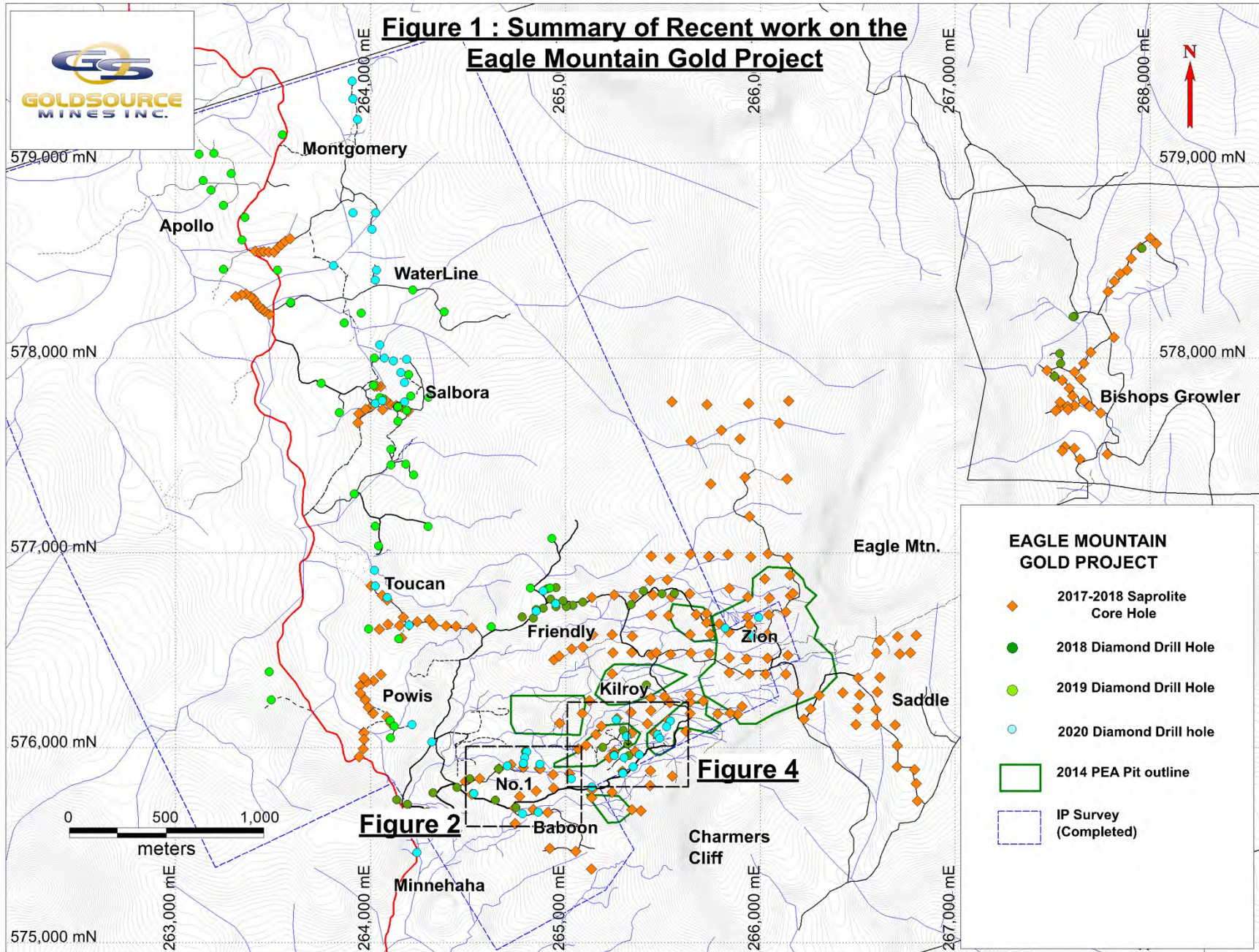
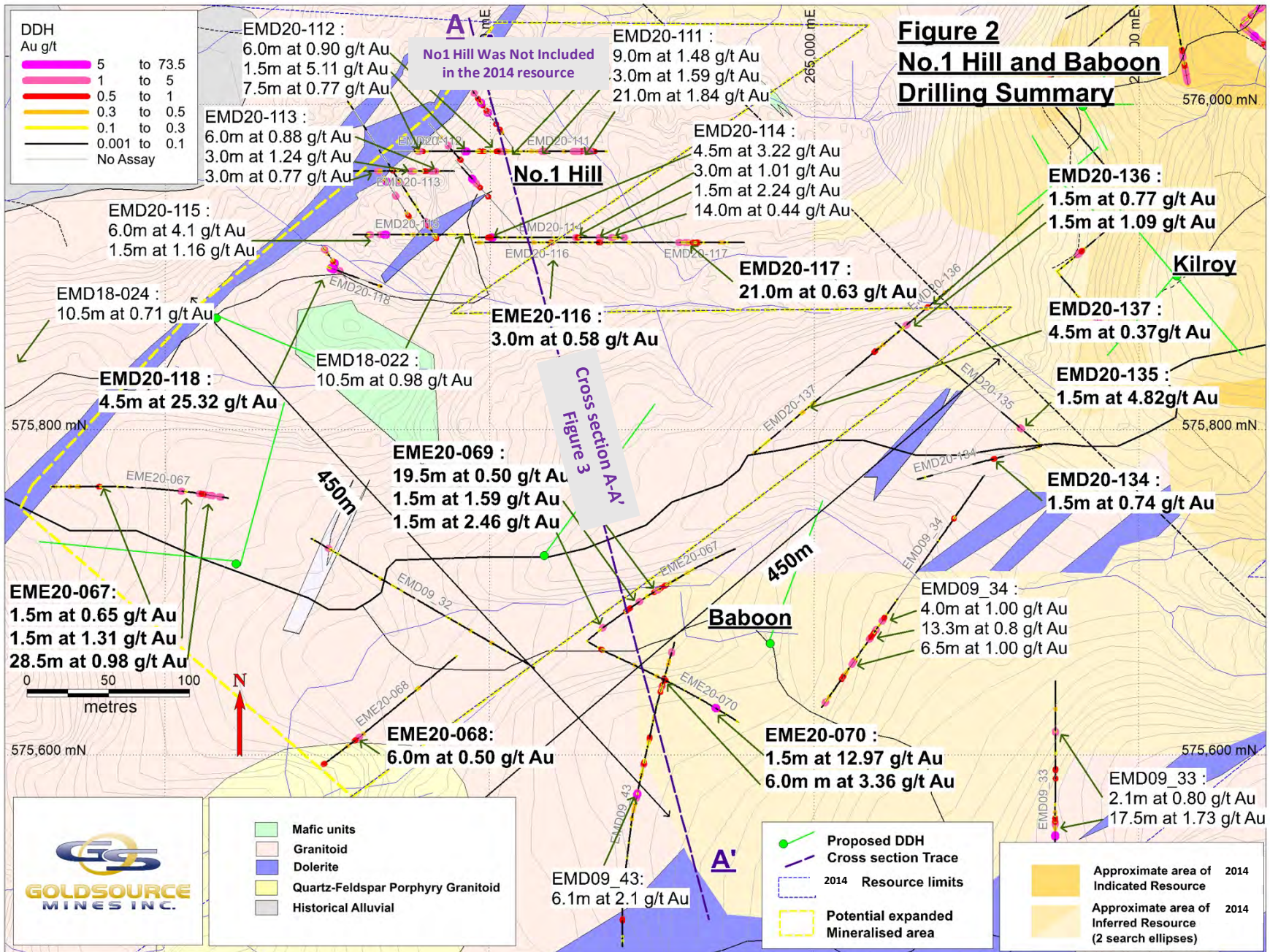




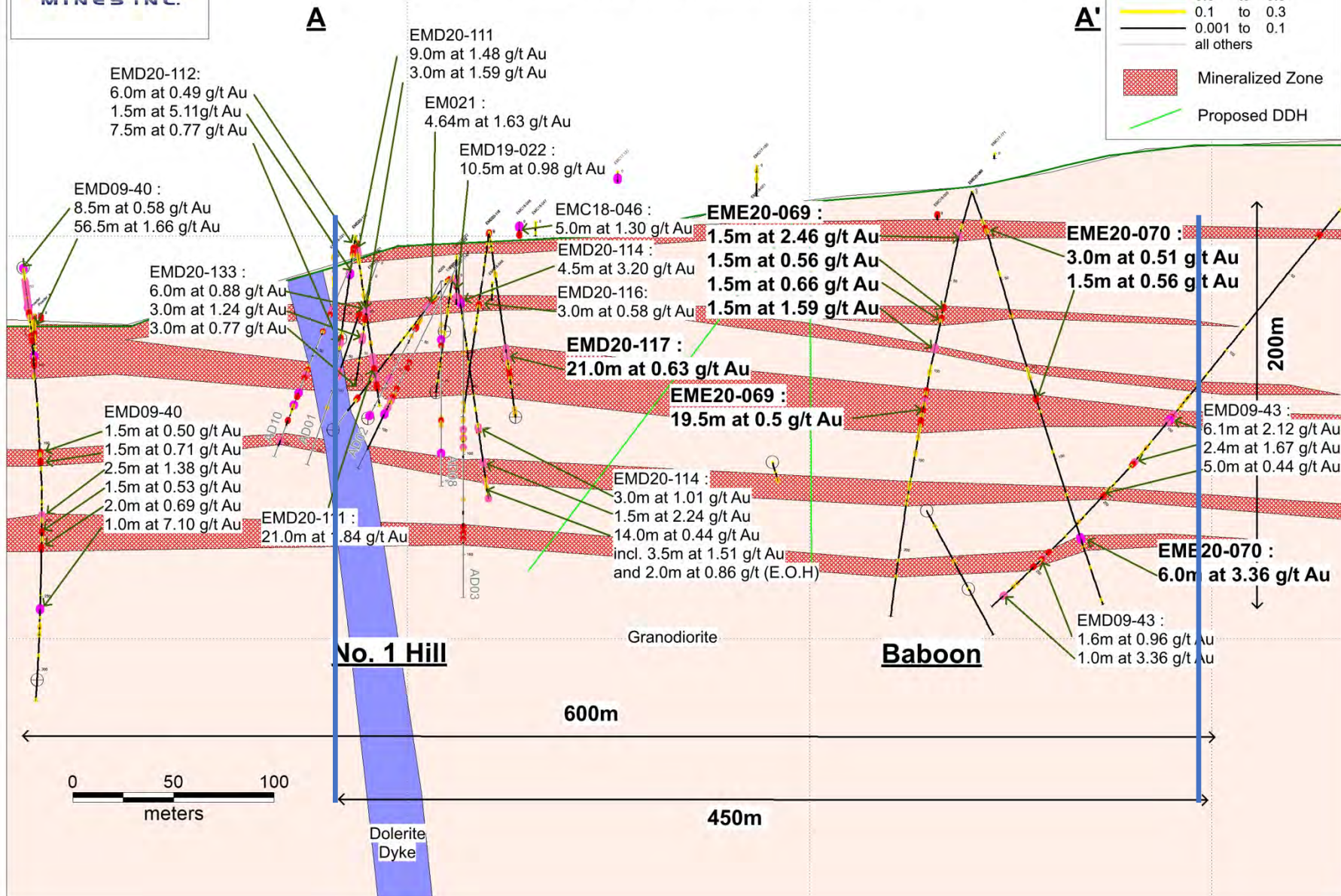
# Figure 1 : Summary of Recent work on the Eagle Mountain Gold Project



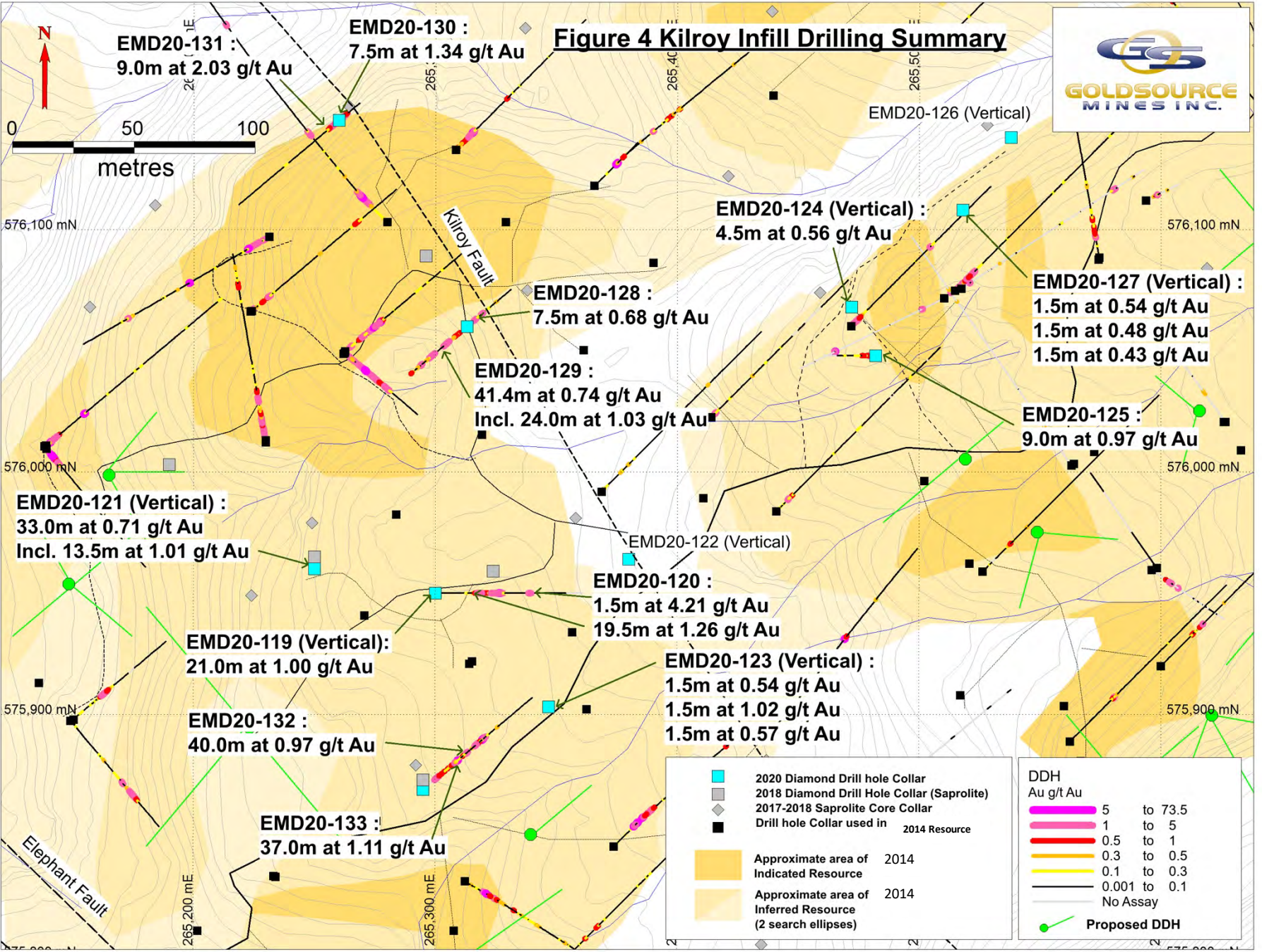




**Figure 3**  
**Cross section A-A' through No.1 Hill and Baboon Prospects,**  
**Eagle Mountain PL. Looking North-East**



# Figure 4 Kilroy Infill Drilling Summary



**EMD20-131 :**  
9.0m at 2.03 g/t Au

**EMD20-130 :**  
7.5m at 1.34 g/t Au

**EMD20-124 (Vertical) :**  
4.5m at 0.56 g/t Au

**EMD20-128 :**  
7.5m at 0.68 g/t Au

**EMD20-127 (Vertical) :**  
1.5m at 0.54 g/t Au  
1.5m at 0.48 g/t Au  
1.5m at 0.43 g/t Au

**EMD20-129 :**  
41.4m at 0.74 g/t Au  
Incl. 24.0m at 1.03 g/t Au

**EMD20-125 :**  
9.0m at 0.97 g/t Au

**EMD20-121 (Vertical) :**  
33.0m at 0.71 g/t Au  
Incl. 13.5m at 1.01 g/t Au

**EMD20-120 :**  
1.5m at 4.21 g/t Au  
19.5m at 1.26 g/t Au

**EMD20-119 (Vertical) :**  
21.0m at 1.00 g/t Au

**EMD20-123 (Vertical) :**  
1.5m at 0.54 g/t Au  
1.5m at 1.02 g/t Au  
1.5m at 0.57 g/t Au

**EMD20-132 :**  
40.0m at 0.97 g/t Au

**EMD20-133 :**  
37.0m at 1.11 g/t Au

	2020 Diamond Drill hole Collar
	2018 Diamond Drill Hole Collar (Saprolite)
	2017-2018 Saprolite Core Collar
	Drill hole Collar used in 2014 Resource
	Approximate area of Indicated Resource 2014
	Approximate area of Inferred Resource 2014 (2 search ellipses)

DDH Au g/t Au	
	5 to 73.5
	1 to 5
	0.5 to 1
	0.3 to 0.5
	0.1 to 0.3
	0.001 to 0.1
	No Assay
	Proposed DDH